



Event Sampling Report



Orion Neighbourhood Catchment Event Report 3 (Feb 2007)

FBA's Priority Neighbourhood Catchments Water Quality Monitoring (PNCWQM) includes sites set up over the Fitzroy Basin gathering event data on sediment, salinity and nutrient (nitrogen and phosphorus) loads. Data will be used in FBA's Monitoring Evaluation Reporting and Review (MERR), but will also aid in setting water quality targets, collection of baseline water quality data and improved understanding of water quality issues amongst stakeholders.

This is the third event report for the Orion catchment with the first report displaying data captured from an event in May 2006, and the second from an event in January this year.

The monitoring site in the Orion Neighbourhood Catchment is located on Orion Creek. Between February 16 and February 19, Greg Barnett collected 6 samples which were tested for Total Suspended Solids, Total Nitrogen, Total Phosphorus, Salinity, pH and Turbidity.

Results

Note: All results are expressed as Kilograms per Megalitre (1,000,000 litres)

Parameter	May 2006 Event	Jan 2007 Event	Feb 2007 Event
Suspended Soil	260 - 2600	330 - 720	750 - 2100
Nitrogen	1.2 - 4.6	1.4 - 2.0	1.4 - 2.3
Phosphorus	0.57 - 2.8	0.44 - 1.2	0.73 - 1.2
Salt	41 - 88	89 - 106	44 - 102

Further explanation of data will be outlined in the water quality report to be released July 2007

Interested in finding out more about this project?

Visit our web site:

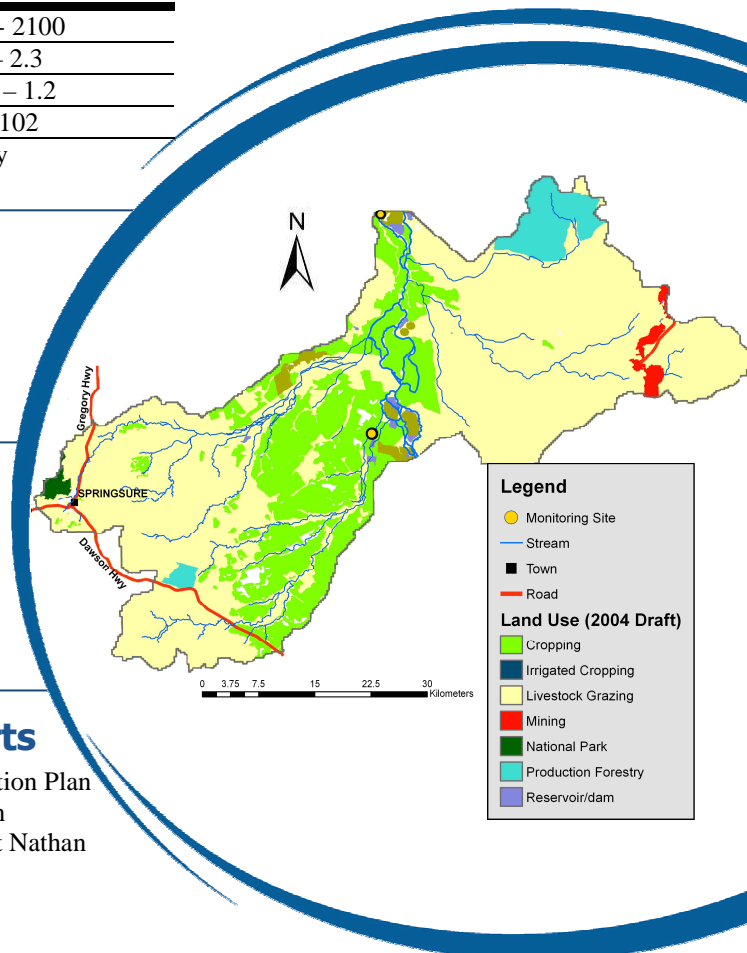
http://www.fba.org.au/programs/priority_neighbourhood_catchments_water_quality_monitoring_program.html

Subscribe to FBA Event Reports

Want these summary reports sent to you hot off the press? Contact Nick Kirby, on (07) 4982 2956 or Nick.Kirby@fba.org.au to get on our Event Report mail-out list (please specify post or email).

Sponsor future monitoring efforts

Monitoring is currently supported by the National Action Plan for Salinity and Water Quality. If you are interested in sponsoring future monitoring for Orion please contact Nathan Johnston on Nathan.Johnston@fba.org.au.



Fitzroy Basin Association is funded by Australian and Queensland Government programmes, including the National Action Plan for Salinity and Water Quality (NAPSWQ), Natural Heritage Trust Extension (NHT2) and the National Landcare Program (NLP).

