



# Event Sampling Report



## Capella Neighbourhood Catchment Event Report 1 (February 2007)

Stakeholder interest inspired FBA to set up a community water quality monitoring site in the Capella Neighbourhood Catchment. The goal of this monitoring is to provide those in each catchment with an idea of the quality of water and the amount of soil, nutrients and salt leaving their catchment. In the future we also hope to provide an indication of normal levels given natural processes and human activities.

Some good rain in February caused a flow in Capella Creek, which drains the Capella Neighbourhood Catchment. Between the 19<sup>th</sup> and 21<sup>st</sup> of February 2007, David Staal collected three samples from the Capella Creek as it flowed through "Crescendo". Samples were tested for Total Suspended Solids, Total Nitrogen, Total Phosphorus, Salinity, pH and Turbidity.

### Results

Note: 1 megalitre = 1,000,000 litres

- 51 – 92kg of suspended soil per megalitre of water was lost
- 1.1 – 1.4kg of nitrogen and 0.16 – 0.22kg of phosphorus per megalitre of water was lost
- 179 – 204kg of salt per megalitre of water was lost

### Interested in finding out more about this project?

Visit our web site:

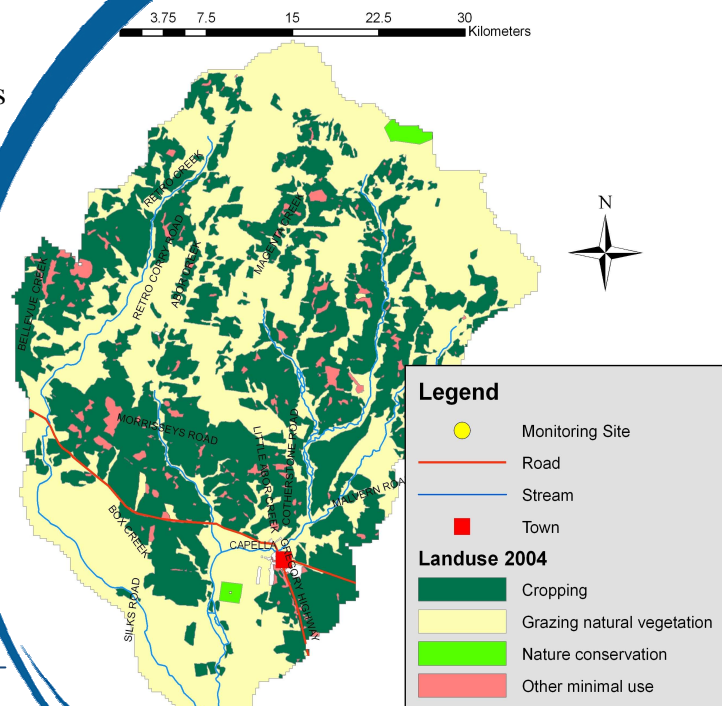
[http://www.fba.org.au/programs/priority\\_neighbourhood\\_catchments\\_water\\_quality\\_monitoring\\_program.html](http://www.fba.org.au/programs/priority_neighbourhood_catchments_water_quality_monitoring_program.html)

### Sponsor future monitoring efforts

Monitoring is currently supported by the National Action Plan for Salinity and Water Quality. If you are interested in sponsoring future monitoring for Capella please contact Nathan Johnston on [Nathan.Johnston@fba.org.au](mailto:Nathan.Johnston@fba.org.au).

### Subscribe to FBA Event Reports

Want these summary reports sent to you hot off the press? Contact Nick Kirby, on (07) 4982 2956 or [Nick.Kirby@fba.org.au](mailto:Nick.Kirby@fba.org.au) to get on our Event Report mail-out list (please specify post or email).



Fitzroy Basin Association is funded by Australian and Queensland Government programmes, including the National Action Plan for Salinity and Water Quality (NAPSWQ), Natural Heritage Trust Extension (NHT2) and the National Landcare Program (NLP).

