




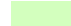


Workshop Areas Landuse - Fitzroy 2004

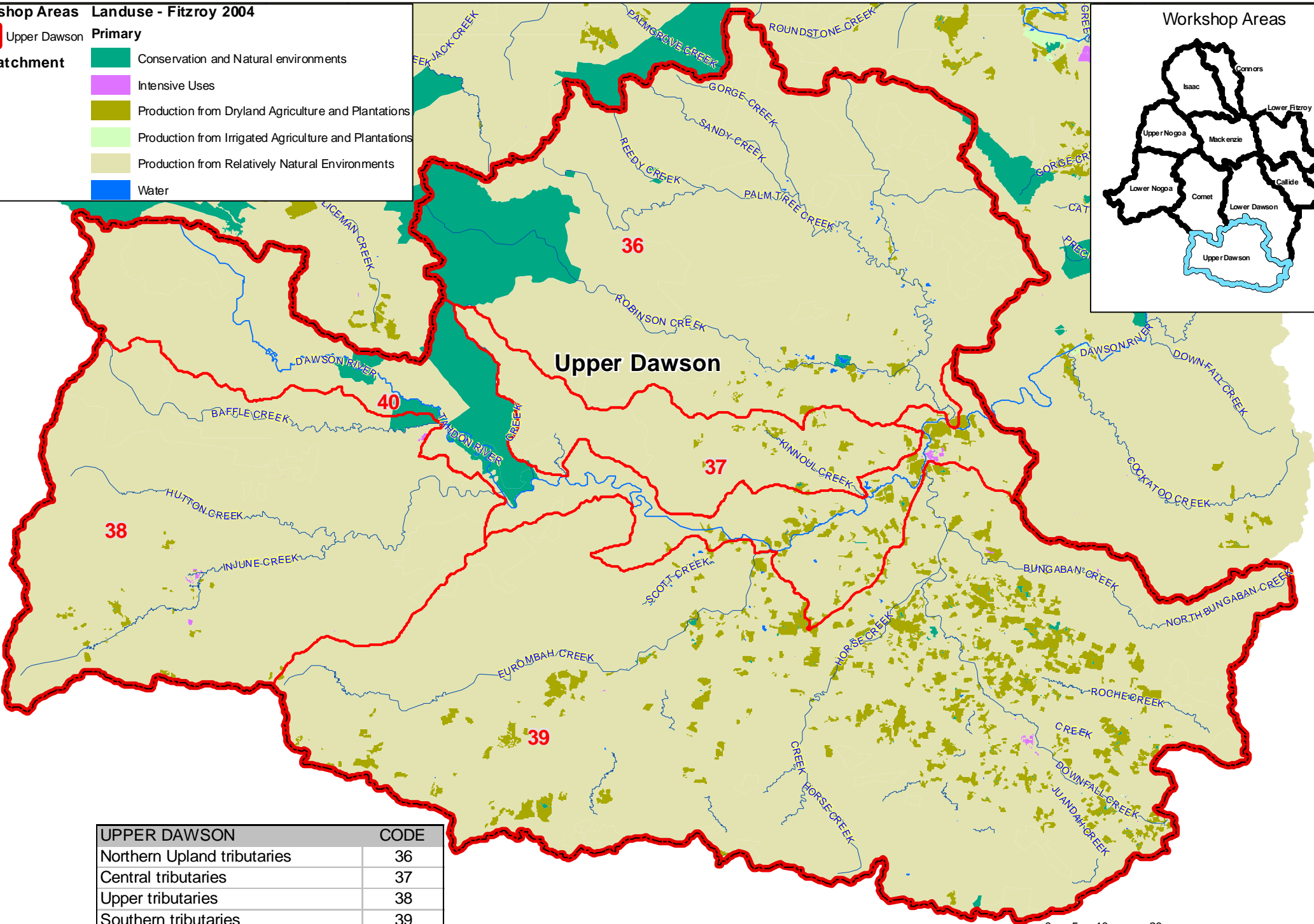
 Upper Dawson

Subcatchment



Primary

-  Conservation and Natural environments
-  Intensive Uses
-  Production from Dryland Agriculture and Plantations
-  Production from Irrigated Agriculture and Plantations
-  Production from Relatively Natural Environments
-  Water



UPPER DAWSON	CODE
Northern Upland tributaries	36
Central tributaries	37
Upper tributaries	38
Southern tributaries	39
Upper Dawson River main channel	40

